

Remote power panel and precision power distribution testing unit

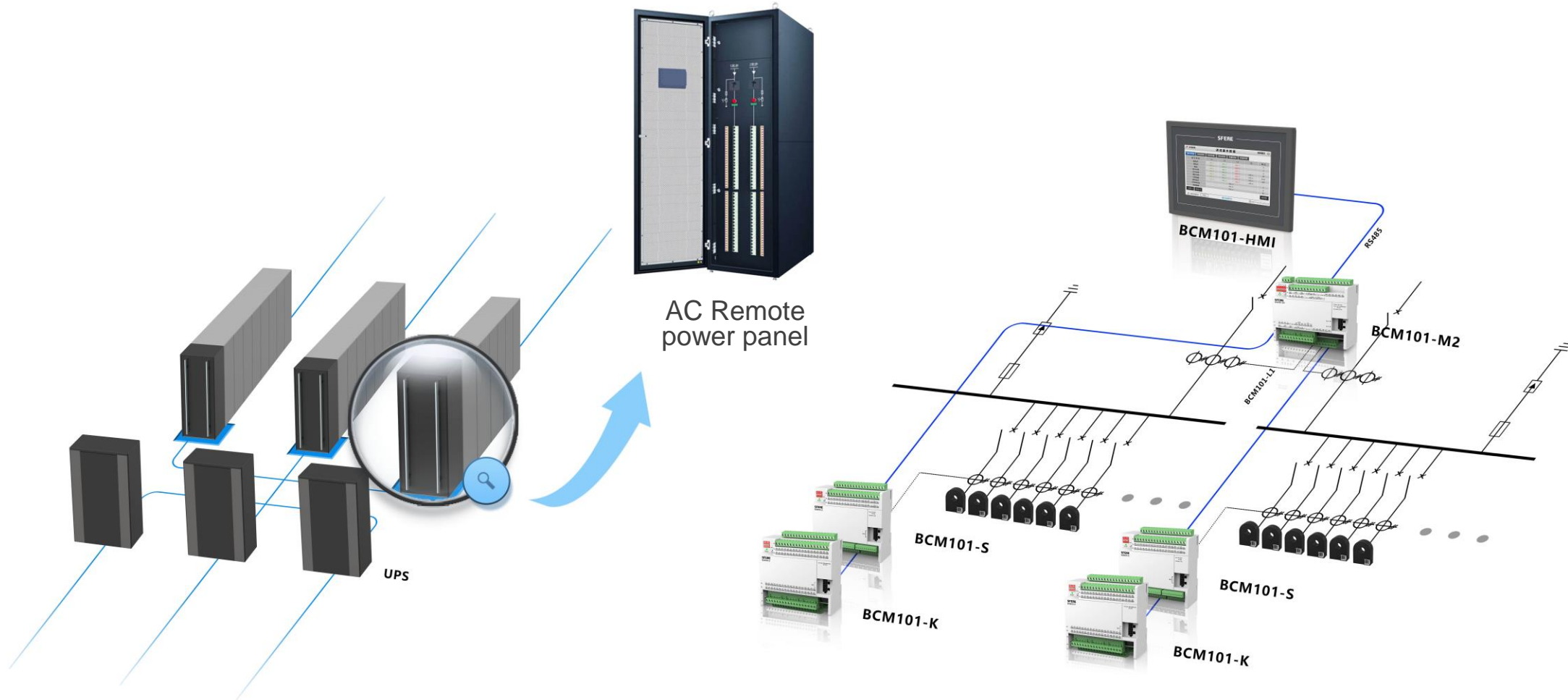
NO.1

Application scenarios of AC remote power panel and precision power distribution units






NO.2

Application scenarios of DC remote power panel and precision power distribution units

Application scenarios of AC remote power panel and precision power distribution units AC380V





Application	Module	Product	Model	Function
AC precision array cabinets	Incoming Line Monitoring Module		BCM101-M1/2	AC incoming lines all-parameter monitoring
	Feeder Monitoring Module		BCM101-S	Single-phase feeder lines all-parameter monitoring
	Switch Monitoring Module		BCM101-K	Monitor the status of switches
	Power Module		BCM101-P	Provide DC24V working power supply for display unit
	Display Module		BCM101-HMI	Display measuring and status

Precision Power Distribution Monitoring Unit AC-380V



Display module BCM101-HMI

7-inch colorful LCD
display;
Touch screen



Incoming line monitoring module BCM101-M1/2

1 or 2 circuits of
incoming lines three-
phase all-parameter
monitoring,
Temperature
measurement,
Power quality analysis,
Digital input,
Relay output,
Event log,
2 RS485 ports,
Ethernet port (optional)



Feeder monitoring module BCM101-S

15~45 circuits of
outgoing lines all-
parameter monitoring
(single module),
Power quality analysis,
Event log,
Judge the switch status
by monitoring the
voltage;
Monitor up to 180
circuits by expanding
modules



Passive switch monitoring module BCM101-K

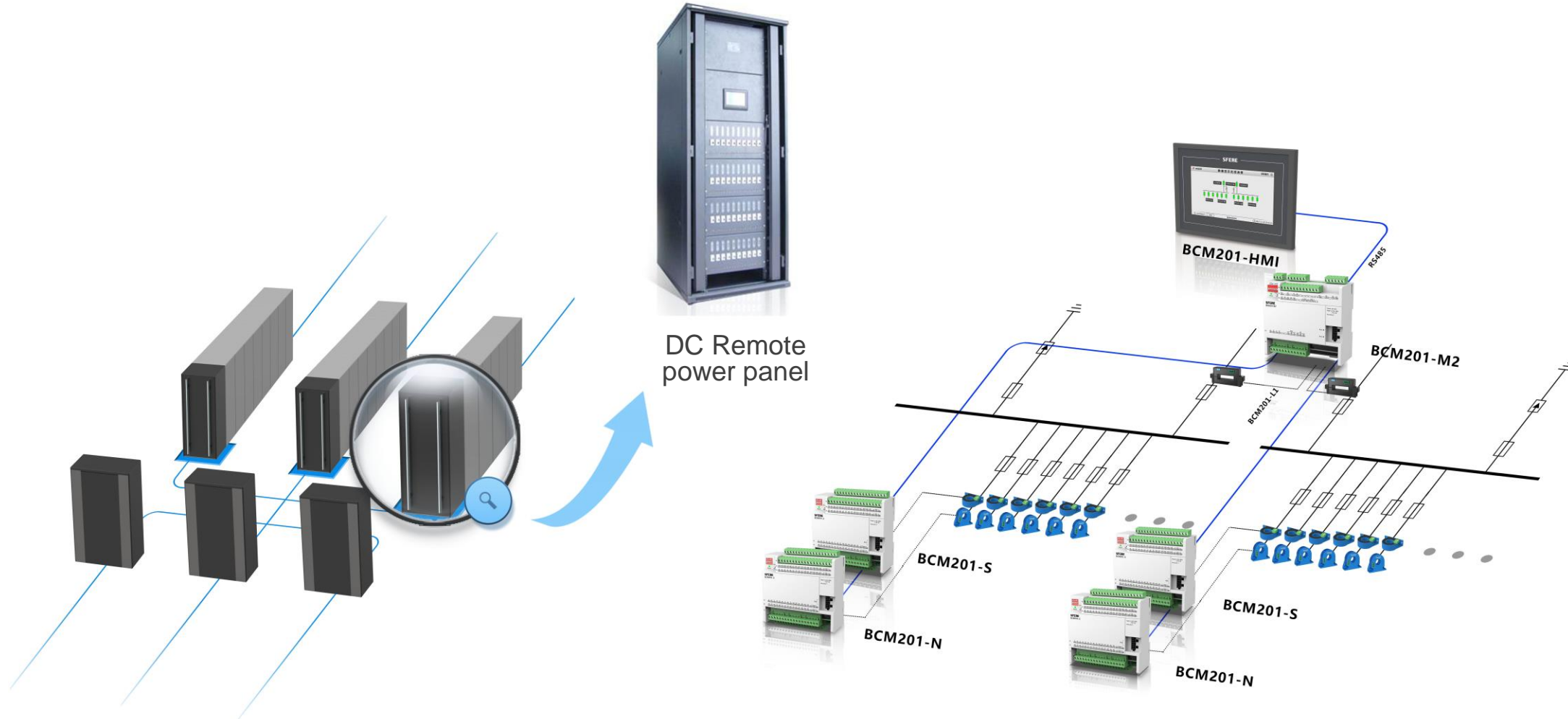
60 channels of switch
monitoring (single
module),
Monitor up to 180
channels by expanding
modules









Power Module BCM101-P

Provide DC24V working
power supply for display
unit

Application scenarios of DC remote power panel and precision power distribution units





Application	Module	Product	Model	Function
DC precision array cabinets	Incoming Line Monitoring Module		BCM201-M1/2	DC incoming lines all-parameter monitoring
	Feeder Monitoring Module		BCM201-S	Single-phase feeder lines all-parameter monitoring
	Switch Monitoring Module		BCM201-K	Monitor the status of switches
	Insulation Monitoring Module		BCM201-N	Monitor the insulation resistance of incoming and feeder circuits
	Power Module		BCM201-P	Provide DC24V working power supply for display unit
	Display Module		BCM201-HMI	Display measuring and status

Precision Power Distribution Monitoring Unit DC-48/240/336V



Display module BCM201-HMI

7-inch colorful LCD display;
Touch screen



Incoming line monitoring module BCM201-M1/2

1 or 2 circuits of incoming lines all-parameter monitoring, Temperature measurement, Digital input, Relay output, Event log, 2 RS485 ports, Ethernet port (optional)



Feeder monitoring module BCM201-S

30 circuits of outgoing lines all-parameter monitoring (single module), Event log, Judge the switch status by monitoring the voltage; Monitor up to 180 circuits by expanding modules



Passive switch monitoring module BCM201-K

60 channels of switch monitoring (single module), Monitor up to 180 channels by expanding modules



Insulation Monitoring Module BCM201-N

6 RS485 communication ports, Each communication port to be connected with 30 leakage sensors



Power Module BCM201-P

Provide DC24V working power supply for display unit

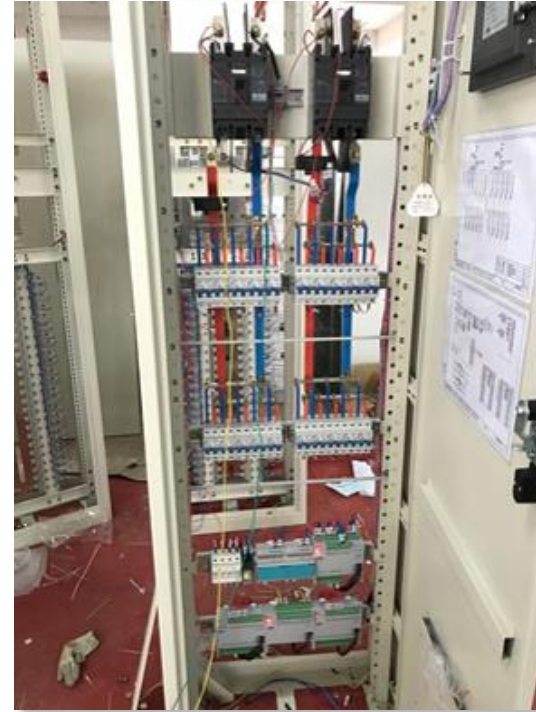
Remote Power Panel and Precision Power Distribution Units Solutions



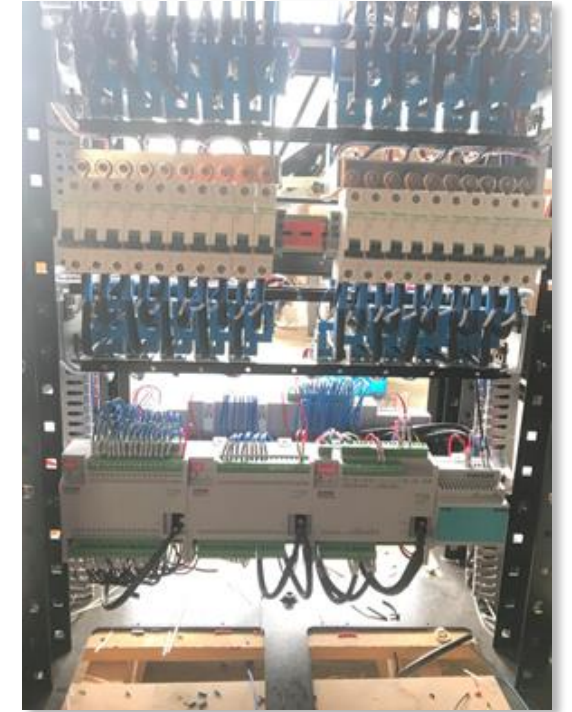
AC



AC



DC



DC

Remote power panel and precision power distribution testing unit



Product Advantages

Small size, easy installation

Optional HMI size, 7-inch, 10-inch, 12-inch, 15-inch, to meet the display needs of different users

Flexible circuit collocation (15, 30, 36, 45)

The design of the dual-channel power module meets the typical power requirements of one main and one standby in the data center (both -48V DC and 220V AC are available)

Conclusion: Both high and low voltage AC and DC solutions are available, covering a wide range of scenarios, fully meeting the implementation standards of data center uptime tier.

Remote power panel and precision power distribution testing unit

Related application cases

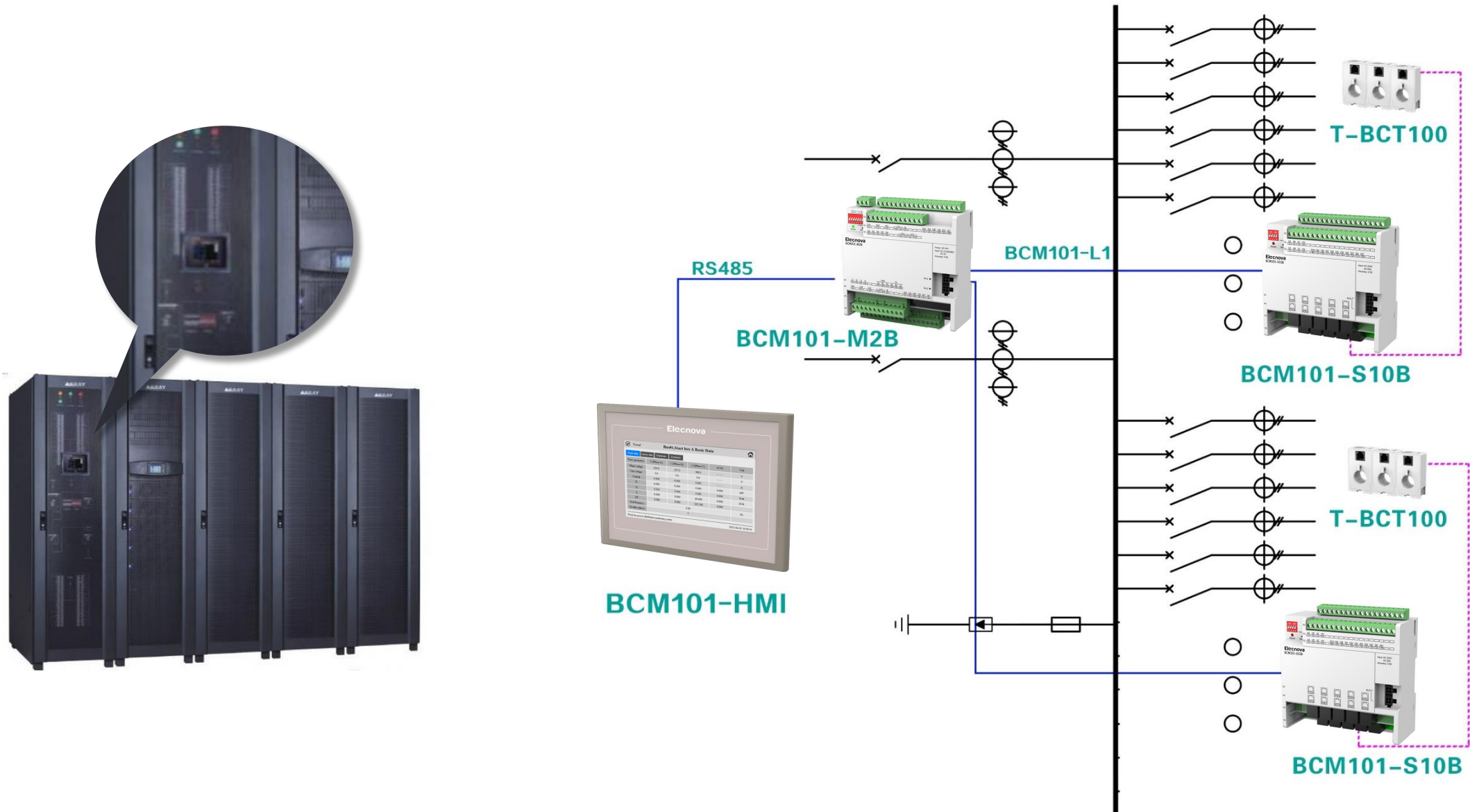
- ★China Mobile's 2019 AC and DC head cabinet products centralized procurement project
- ★Various project-based procurement in 2019
- ★China Mobile's 2020-2021 Centralized Procurement Project for In-Line Head Cabinet Products
- ★Big Data Center in the Upper Yangtze River Region and Yibin Big Data Industrial Park (Phase I) Project
- ★Shanghai Financial Futures Exchange Project
- ★China Mobile's 2022-2024 Centralized Procurement Project for In-Line Head Cabinet Products



UPS input and output cabinet solution

UPS input and output cabinet solution






Monitoring system structure



UPS input and output cabinet solution

Monitoring modules



Application	Module	Product	Model	Function
AC precision array cabinets	Incoming Line Monitoring Module		BCM101-M2B	Incoming line full power monitoring
	Feeder Monitoring Module		BCM101-S10B	Single module 10-way three-phase outgoing line full power monitoring
	Power Module		BCM101-P	Provide DC24V working power supply for display unit
	Display Module		BCM101-HMI	Display measuring and status
	External CT		T-BCT	Suitable for various occasions

UPS input and output cabinet solution

Monitoring modules

Elecnova



Display module

7-inch colorful LCD display;
Touch screen



Incoming line monitoring module

Support 1-way or 2-way incoming line full power monitoring;
Support digital input, relay output, temperature;
Support 2 RS485 ports, optional Ethernet port;
Support event recording function



Feeder Monitoring Module

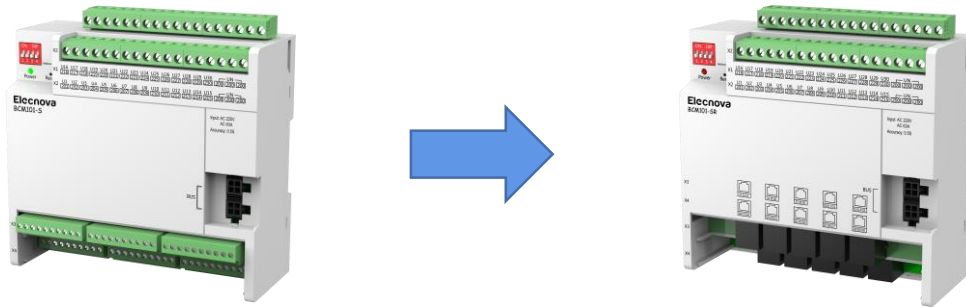
Support single module 10-way three-phase outgoing line full power monitoring;
Support 10 channels of passive switch status input;
Support event recording function



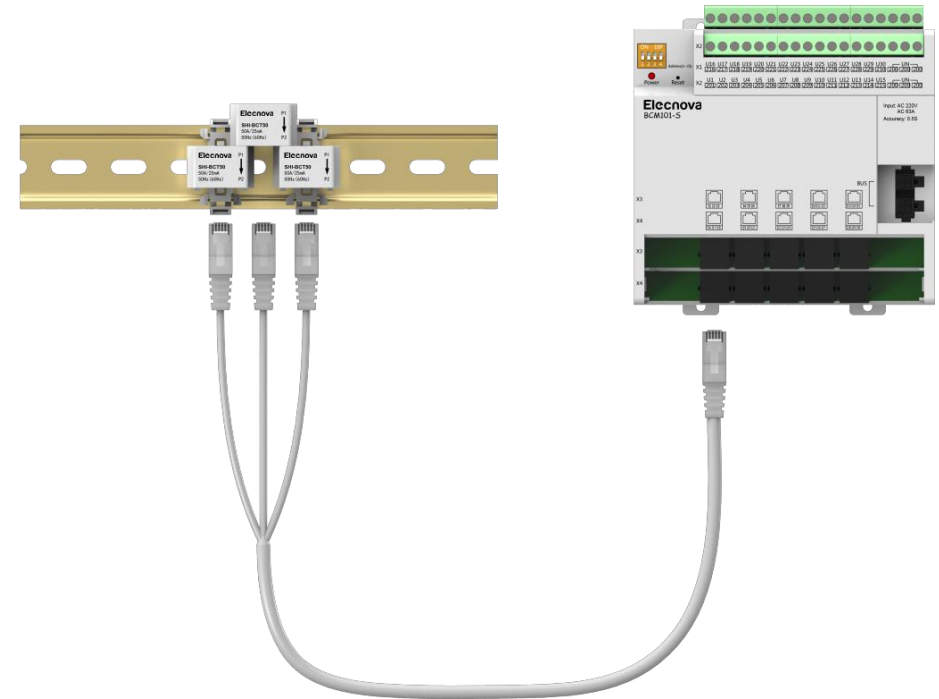
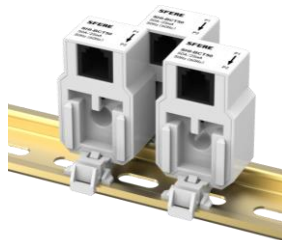
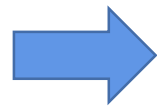
Power Module

Provide DC24V working power supply for display unit

UPS input and output cabinet solution

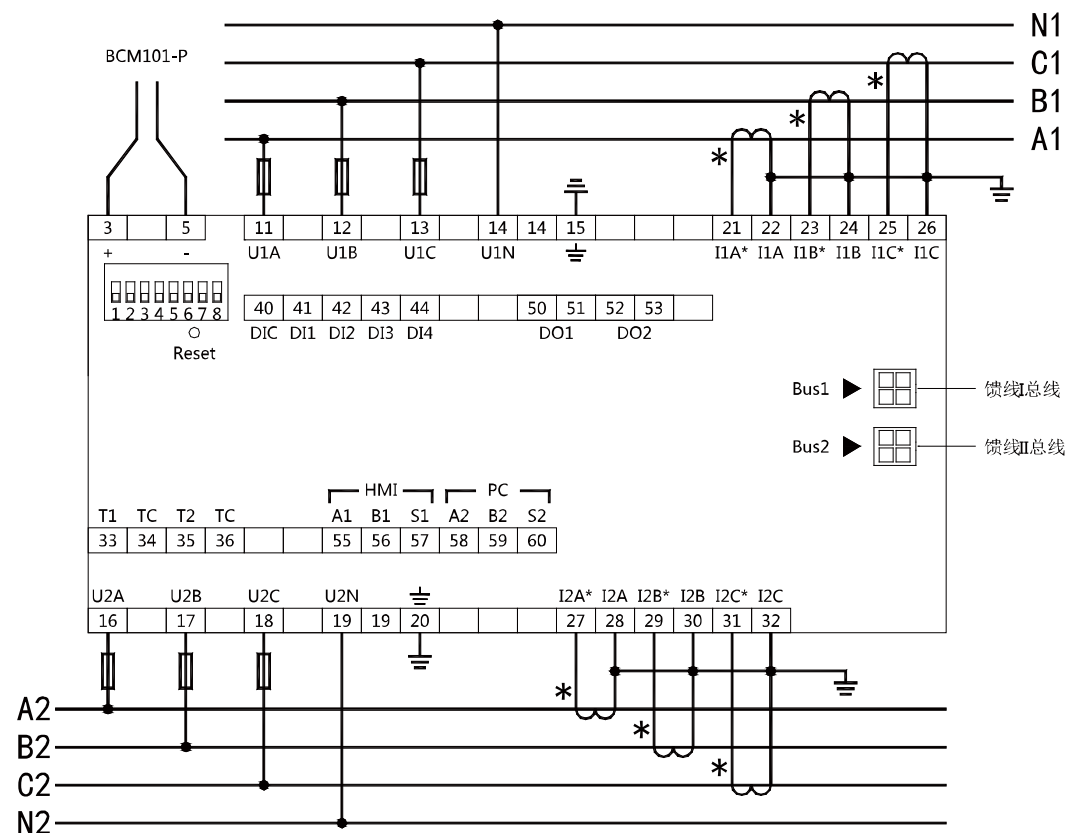


30 channels of single-phase measurement become 10 channels of three-phase measurement

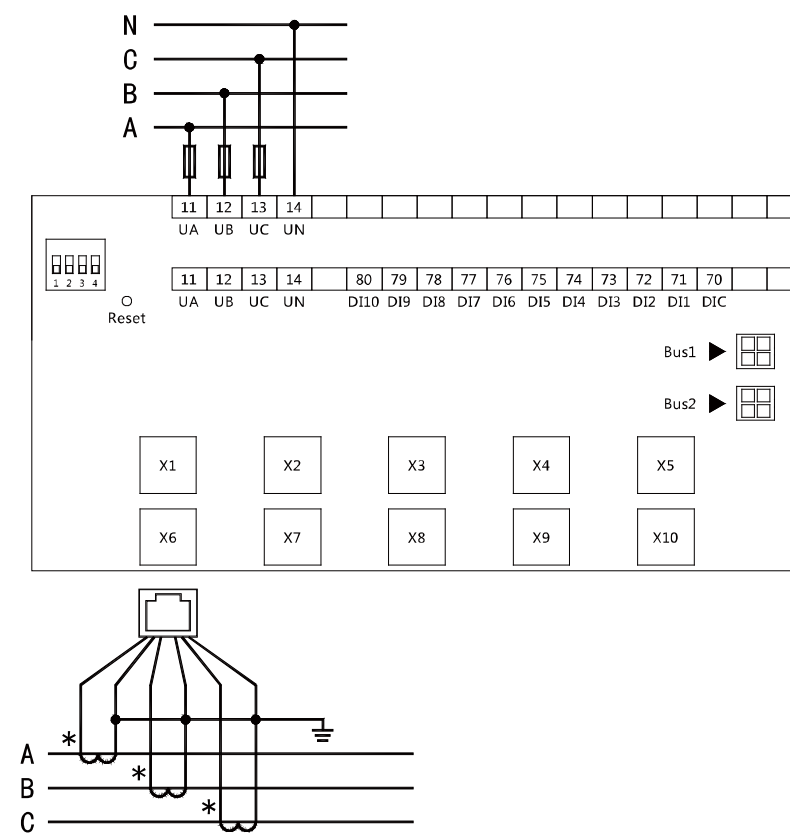


Exclusive current transformer;
high measurement accuracy;
novel and reliable structure;
easy installation.

UPS input and output cabinet solution

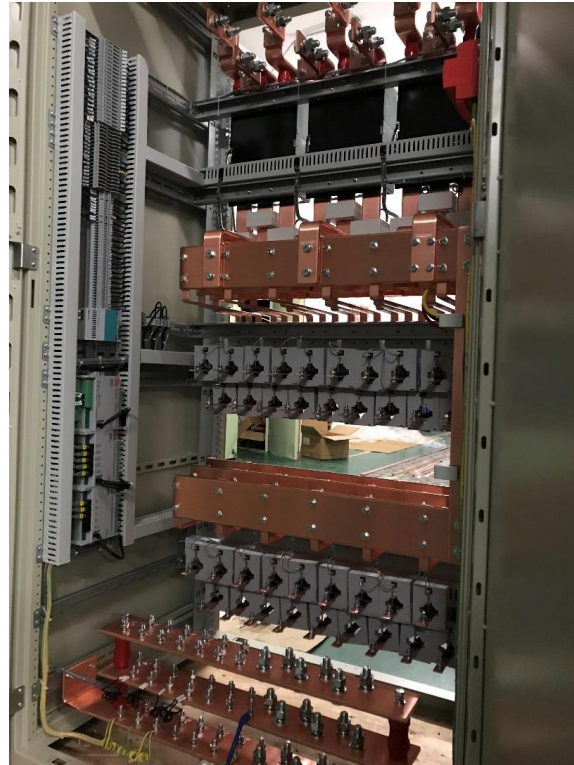
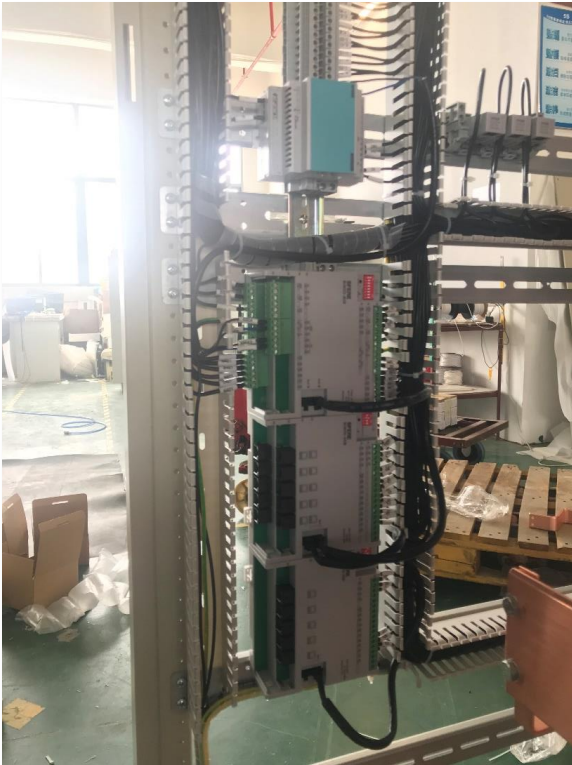


Incoming line monitoring module BCM101-M1B/M2B



Outgoing line monitoring module BCM101-S1B/S5B/S10B

UPS input and output cabinet solution



UPS input and output cabinet solution



Product Advantages

Small size, easy installation

The transformer is free of wiring, saving labor

Cost-effective.

Flexible three-phase outgoing circuit configuration (5, 10)

The man-machine interface size is optional, 7 inches, 10 inches, 12 inches, 15 inches, to meet the display needs of different users

Conclusion: The flexible configuration scheme covers a wide range of scenarios and fully meets the monitoring requirements of the UPS status of the data center.

UPS input and output cabinet solution

Related application cases

- ★ 2018-2019 Chongqing Mobile UPS Input and Output Cabinet Provincial Procurement Project
- ★ 2020-2021 Liaoning Mobile UPS Input and Output Cabinet Provincial Procurement Project
- ★ 2019-2020 Shanghai Mobile UPS Input and Output Cabinet Provincial Procurement Project
- ★ China Mobile Shanxi Company's 2020 Shanxi Mobile UPS Input and Output Power Distribution Cabinet Centralized Procurement Project
- ★ China Mobile Xinjiang Company 2019-2020 UPS input and output screen, air conditioning distribution screen procurement project



Conventional power distribution solutions-Power quality